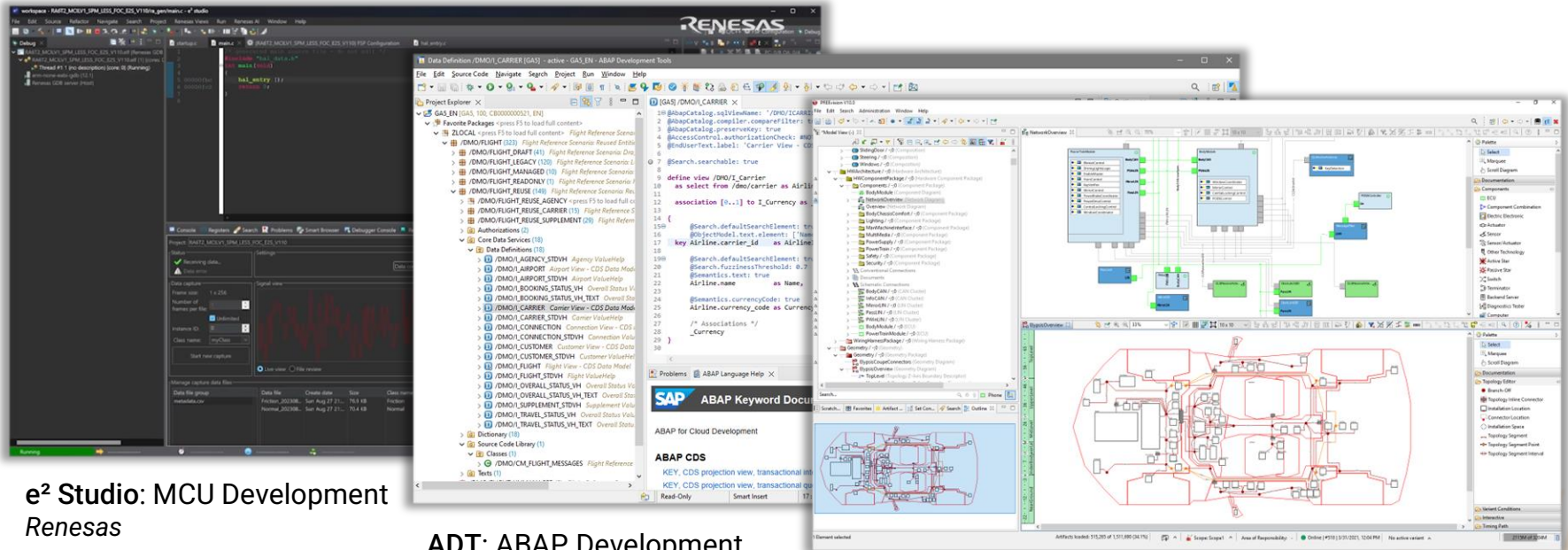




## Eclipse IDE and RCP Platform: Unveiling the Past, Present and Future

Johannes Matheis (Vector Informatik GmbH), Mark Goodchild (Renesas), Sebastian Ratz (SAP SE), Heiko Klare (Vector Informatik GmbH)

# Eclipse RCP: A Widely Adopted Framework

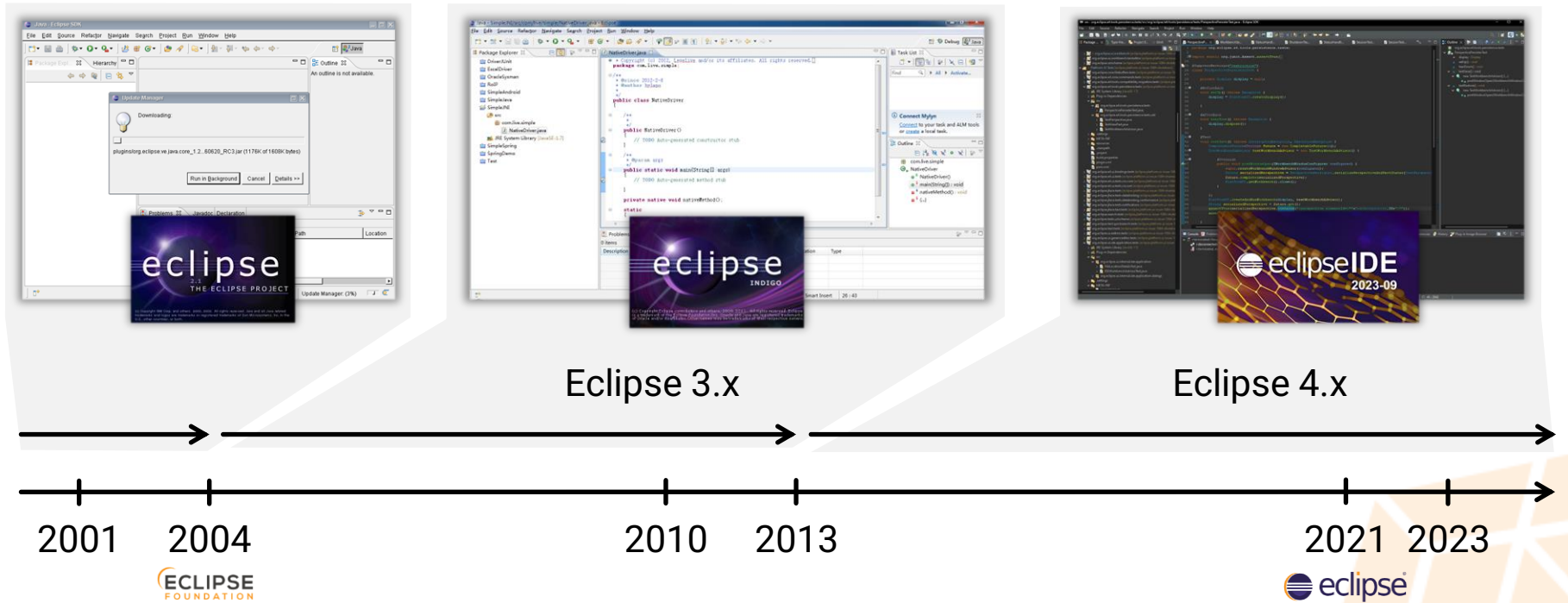


e2 Studio: MCU Development  
Renesas

ADT: ABAP Development  
SAP SE

PREEvision: E/E Design  
Vector Informatik GmbH

# Eclipse IDE: 20 Years of History



# Drivers for Eclipse Adoption

## Vendor Neutral



### Active Member Companies:

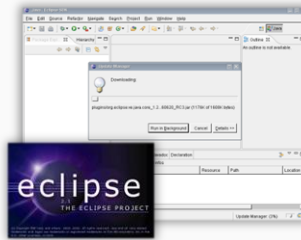
Member companies supporting this project over the last three months.



## Open Source / Open to Contribute



## Proven and Stabilized



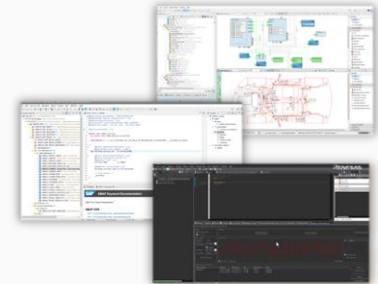
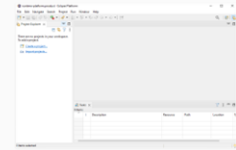
2001



2023



## Extensible



# Current State of the Eclipse IDE / RCP

Still several USPs

... *but lacking*

- Attractiveness
- Responsiveness
- Ease of use
- ...




# Missing Progress in Last Decade

**2013**

**2022**

ECLIPSE CON2022

# Trends in IDE Development

 Supported via extensible RCP platform



## Simplification of Dev Workflows

Improve UX/UI / responsiveness / setup



## Cloud IDEs

Improve browser integration / portability



## AI-Supported Coding

Improve ease-of-integration (e.g., LSP)



## Greater Emphasis on Security

Security and vulnerability initiative at EF



## Emerging Technologies

Integrate dev containers (see VS Code)



## Ecosystems, not just Communities

Improve ease-of-use / monetization



## Rise of APIs



## Social Coding



# Progress Since EclipseCon 2022

## Eclipse IDE Working Group Investments

- Secured investments
- Additional funding & developers
- New charter

## Eclipse Hackathon at SAP



## Simplification of Development Workflows

Started analyzing and addressing fundamental issues:

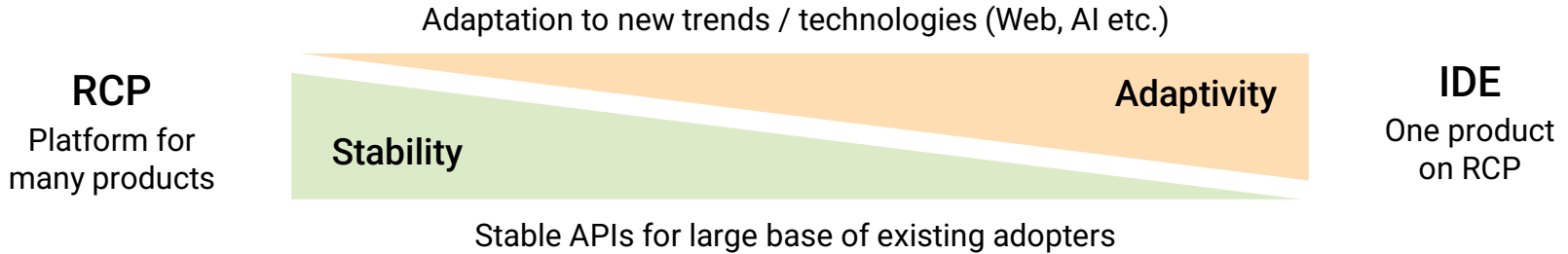
- Attractiveness / ease of use
- Responsiveness
- Keep up with new trends (AI)





# Challenges in Platform Development

## Trade-Offs



## Architectural Challenges

- Synchronous execution
- SWT paradigm

# Current Work on Essential Topics



## Simplification of Dev Workflows

Improve UX/UI / responsiveness / setup



## AI-Supported Coding



Improve ease-of-integration (e.g., LSP)



## Emerging Technologies



Integrate dev containers (see VS Code)



## Rise of APIs



## Social Coding



## Modernized UX / UI

- Modernized look and feel
- Proper HiDPI support
- Performance (responsiveness, freezes)

## Lightweight Setup (IDE + Workspace)

- Onboarding

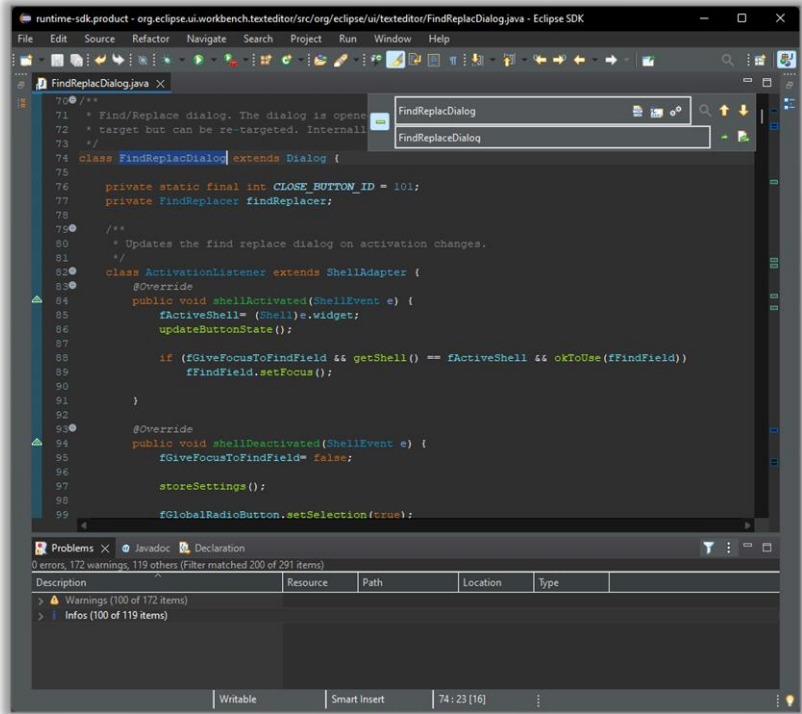
## Adoption of AI Trends

## Support for Technology Providers

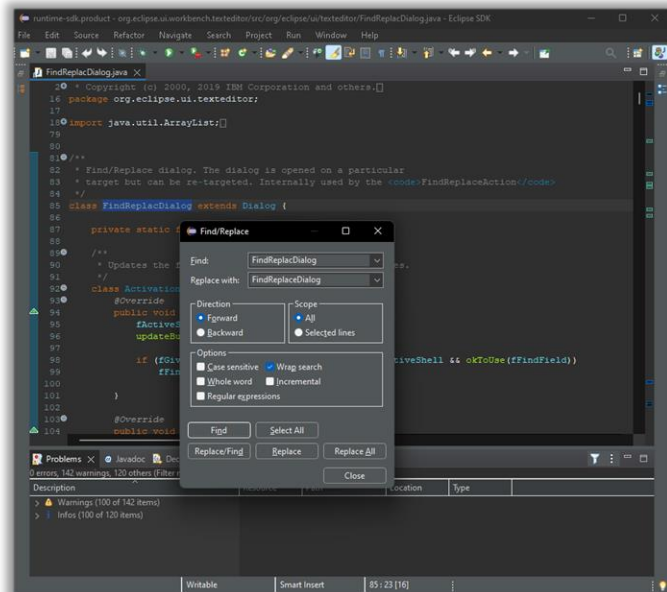


# Modernized Find and Replace

State: WiP  
Proposal approved,  
Initial PR in discussion



← New:  
Overlay or  
integrated  
in view



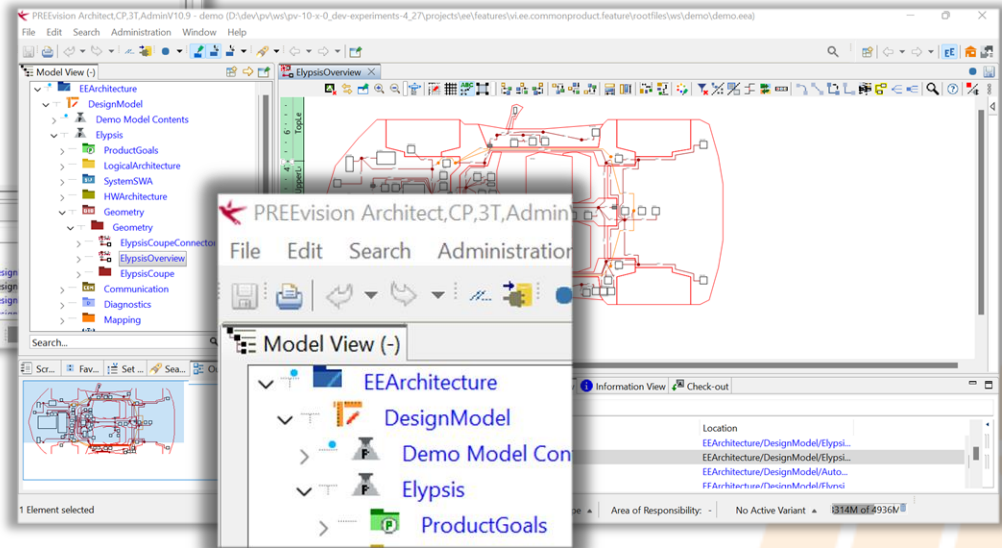
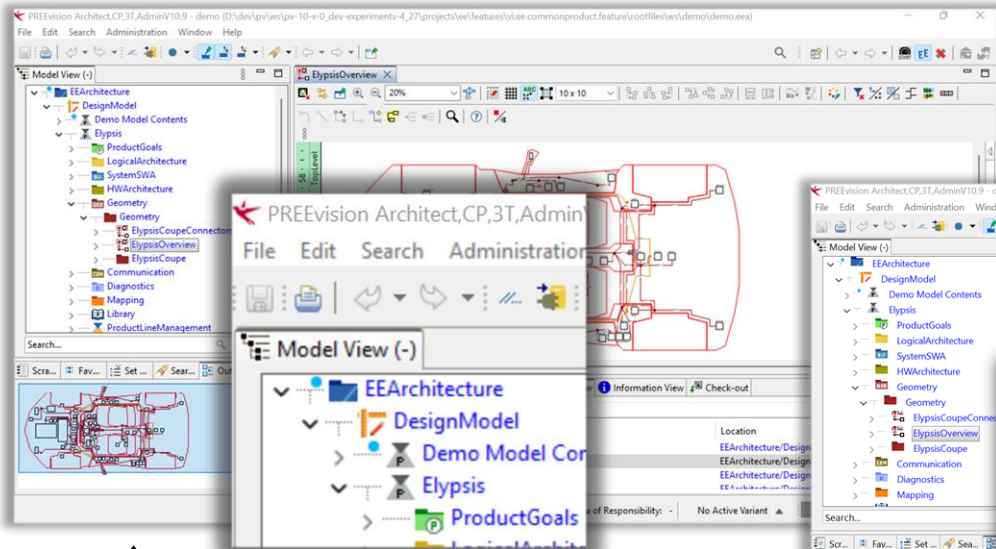
Existing: →  
Free-floating  
dialog



# Multi-Monitor HiDPI Support

State: WiP  
Advanced technical realization

New:  
Sharp scaling

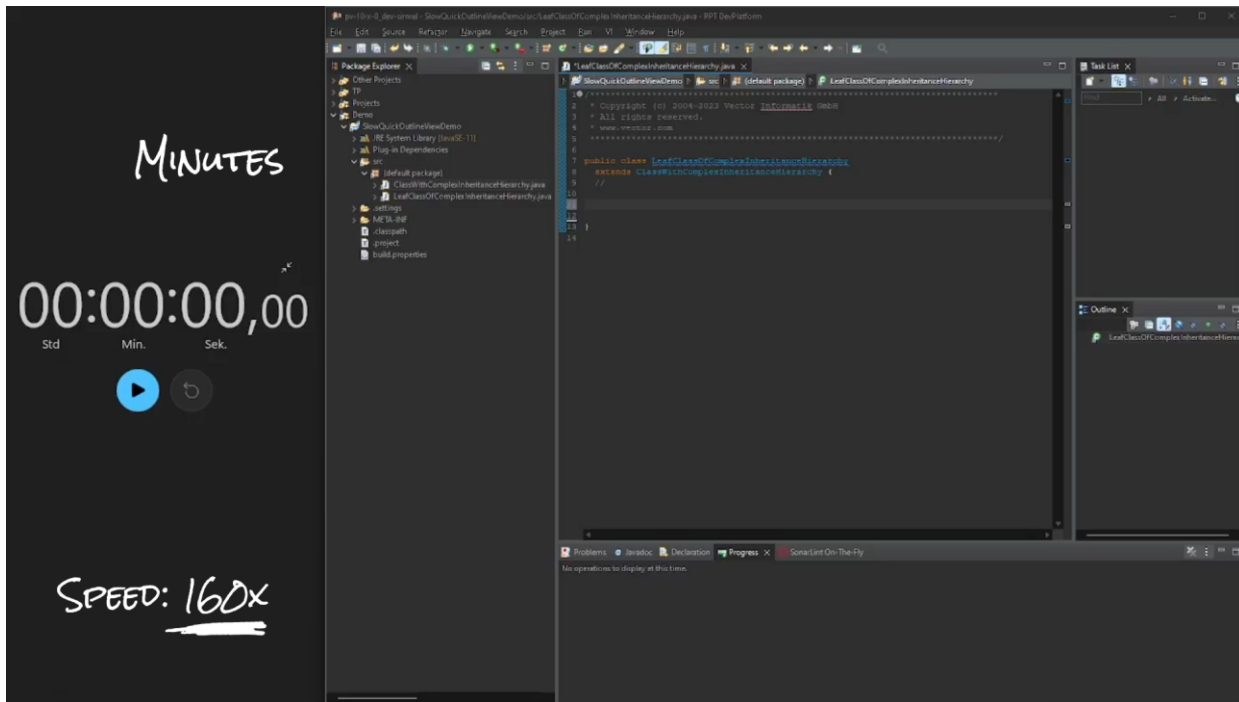


Current:  
Blurry scaling

Moving to Monitor With  
Different DPI Scaling

Here: 150%

# Long UI Freezes in IDE



## State: Analysis

To be addressed  
in the next time

## Quick Outline in Class With Complex Hierarchy

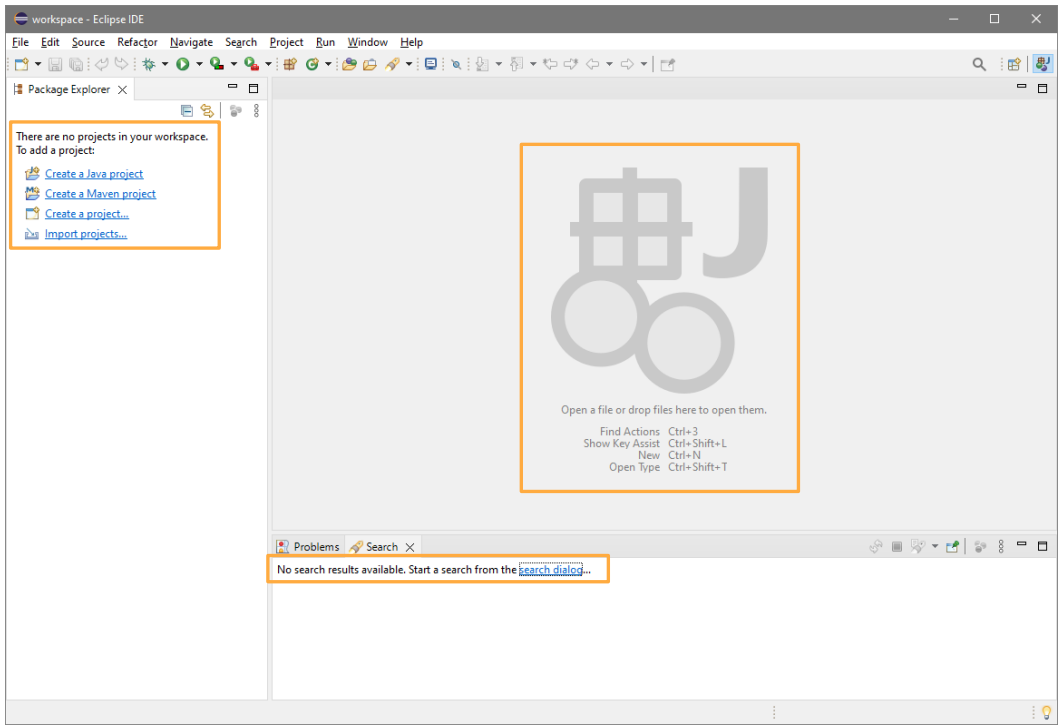
Severe performance issue  
in large projects

2000 Plug-ins – PREEvision



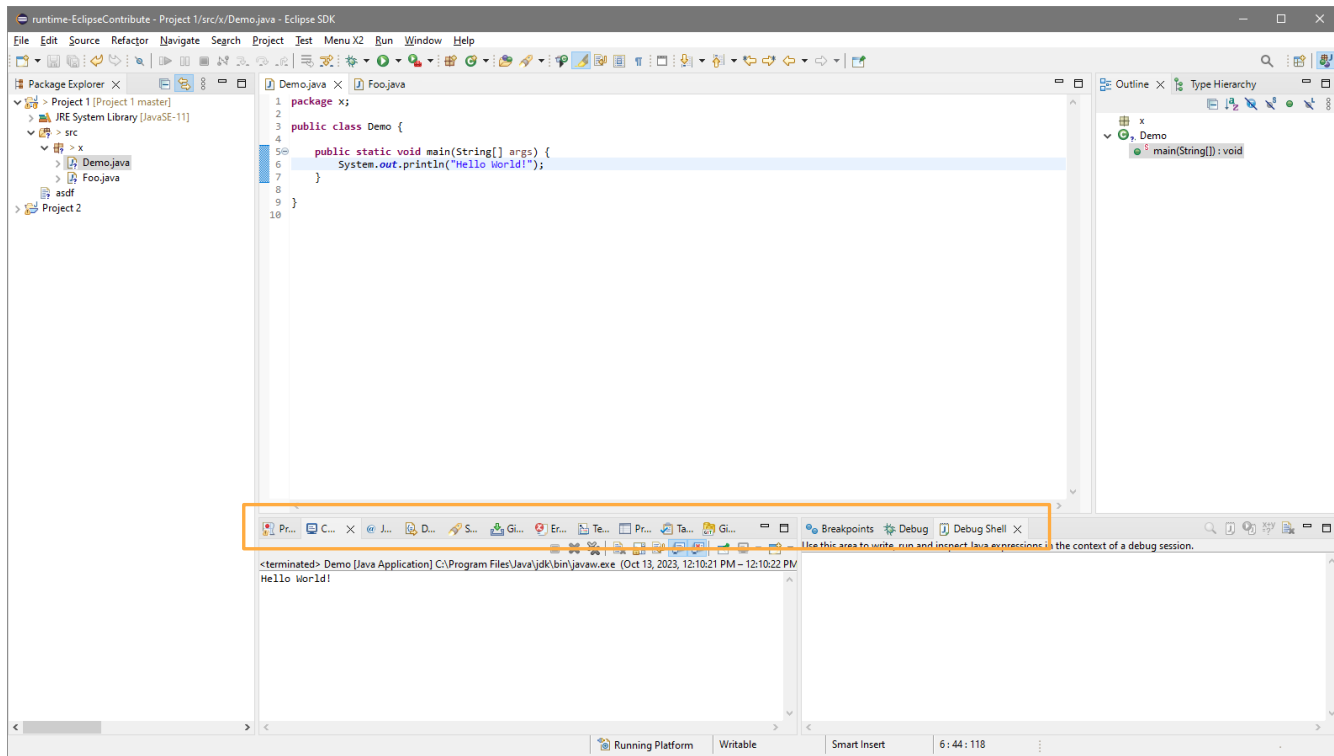
# Improved Onboarding

State: Done  
Released with  
2023-06

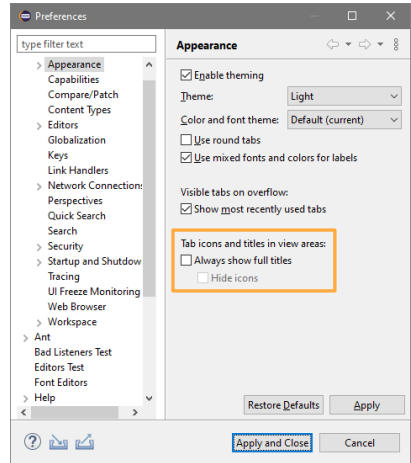




# Lightweight UI



State: WiP  
PR open,  
Functionality agreed

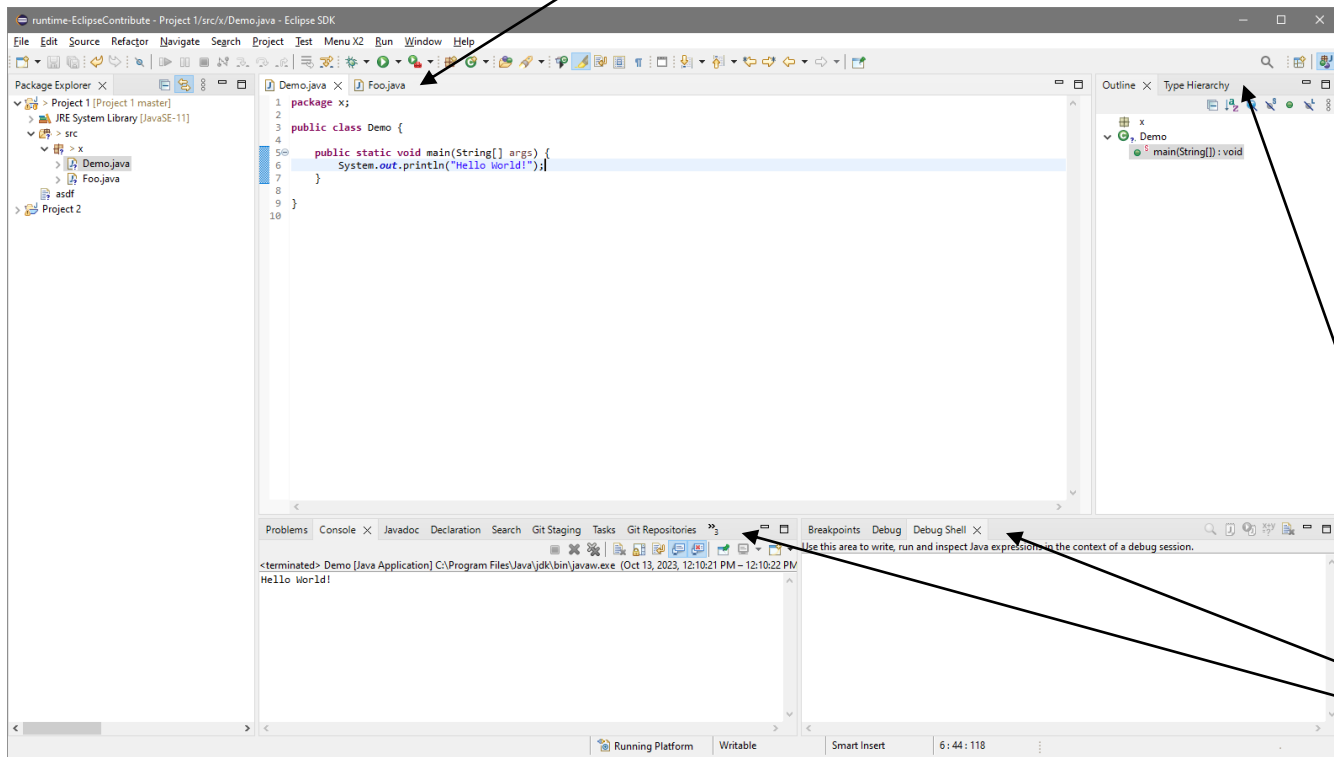


# Lightweight UI

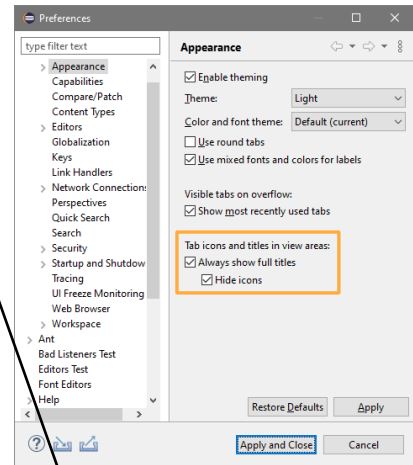
Editor area:  
*'main actor'*



Simplification of Dev Workflows



State: WiP  
PR open,  
Functionality agreed



View areas:  
*'supporting actors'*



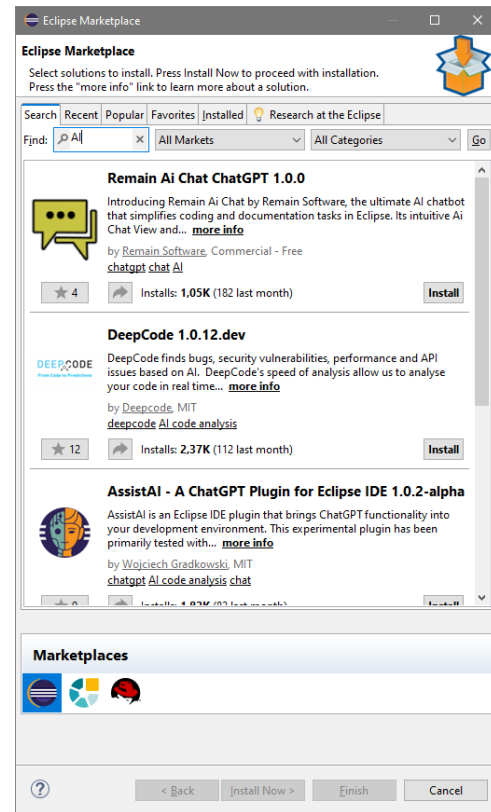
# AI Integration

## Technical Architecture

- Powerful RCP / IDE extension points
- AI integration is possible and mostly an implementation detail
- Is there something missing?

## Variety in the Eclipse Ecosystem

- Some AI extensions already out there
- Not all vendors offer 'official' solutions (yet)
- But users are asking for them\*

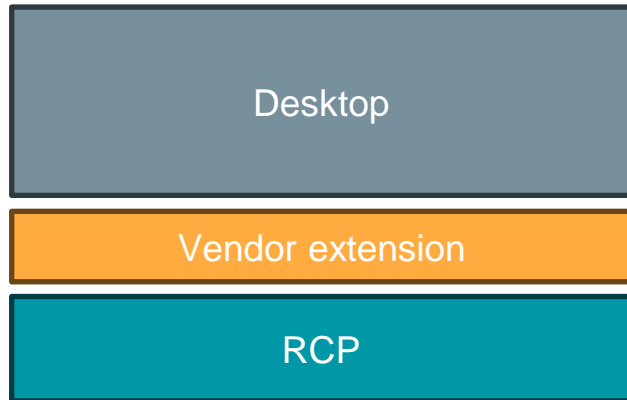


\* <https://github.com/orgs/community/discussions/51197>

# Vendor Vision and Strategy

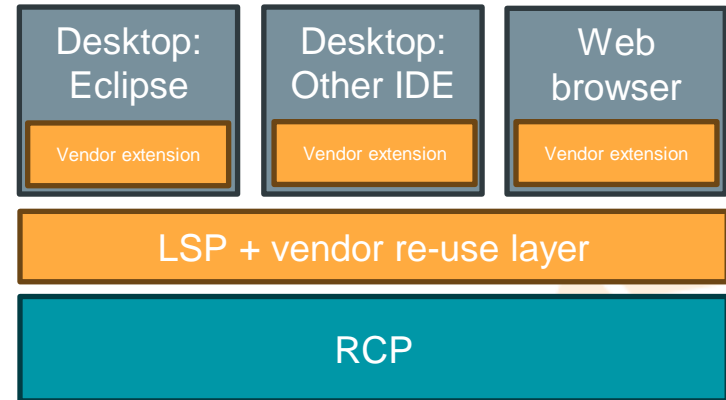
## 'All-In' – Opt for Desktop

- Target = end-user desktop machines
- RCP
- -> *dedicated toolsets for industry solutions*



## Choice for End-Users

- Target = multiple environments
- RCP + LSP for maximum re-use
- -> *programming language plug-ins for IDEs, AI*



# Assessment of the Eclipse RCP and IDE Ecosystem

- RCP offering is uniquely powerful
- Architecture is tried and tested
- Can handle large workloads
- Eclipse is *the* vendor-neutral RCP and desktop IDE
- LSP is showing the way to target more ecosystems

# Conclusion



Simplification of Dev Workflows



AI-Supported Coding



Emerging Technologies



Rise of APIs



Cloud IDEs



Greater Emphasis on Security



Ecosystems, not just Communities



Social Coding

## Let's grow with us!

- Feedback
- Discussion
- **Contributions**
- ...



## Join Our BoF Session

Eclipse IDE – Contributors and Committer

Today, 19:00 – 20:00

Schubartsaal

## Eclipse IDE Working Group

<https://eclipseide.org/working-group/>

## Eclipse SimRel

<https://github.com/eclipse-simrel>

# Thank you!

Join the conversation:

 [@EclipseCon](https://twitter.com/EclipseCon) | [#EclipseCon](https://twitter.com/EclipseCon)

