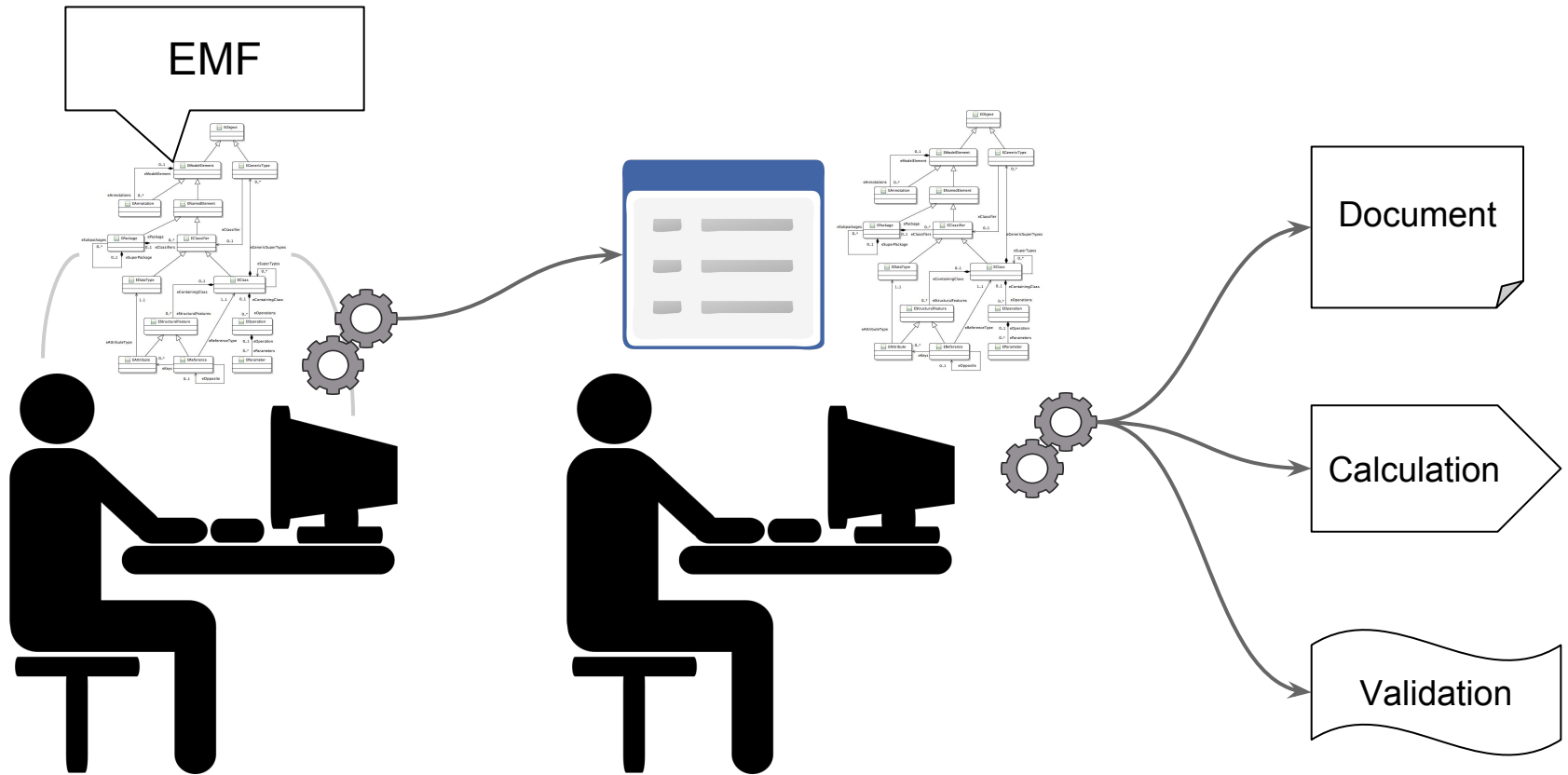


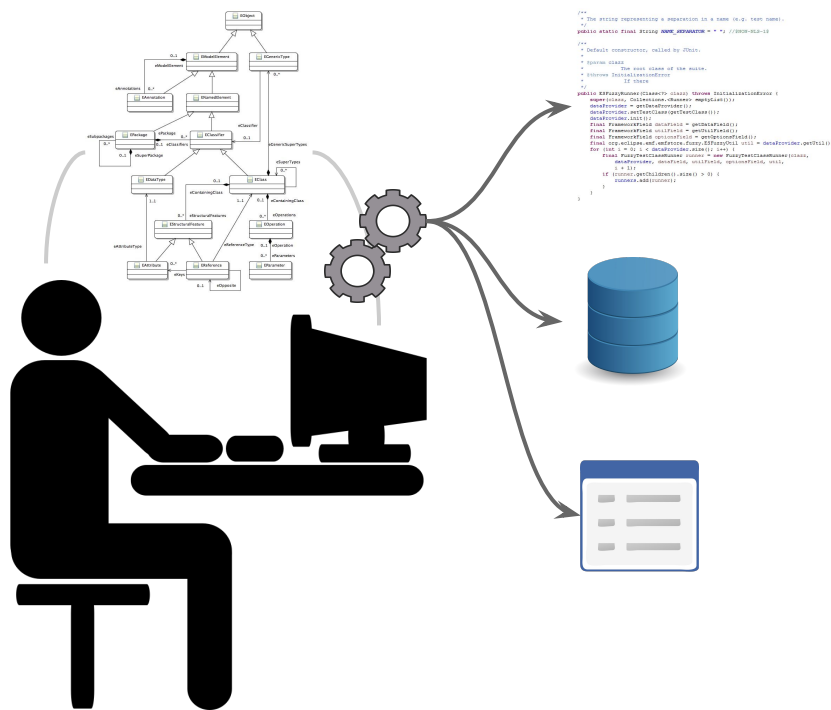
Building modeling tools based on EMF

Jonas Helming

Tools for engineers



Benefits of using EMF to create a tool



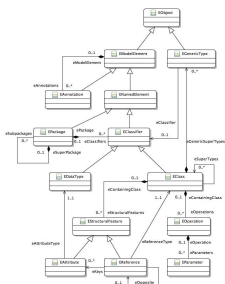
- Src Code
- Persistence
- Undo/Redo
- Model Instance Migration
- Tree-based UI
- Form-based UI
- Table-based UI
- Versioning (Compare)
- Reflective API
- Graphical UIs?

Modeling a coffee machine



- ▼ ☕ Machine XPX 3001
 - ▼ 📄 Control Unit 0
 - ▨ Processor
 - 💾 RAM 0
 - 📁 Dip Tray 0
 - ▼ 🔻 Brewing Unit 0
 - 🛢️ Water Tank 0

Modeling in EMF



```

Shell shell = new Shell (display);
GridLayout GridLayout = new GridLayout (5, false);
shell.setLayout (GridLayout);

Label Vorname = new Label (shell, SWT.NONE);
Vorname.setText ("Vorname");

Text VornameFeld = new Text (shell, SWT.BORDER);
GridData data = new GridData (SWT.FILL, SWT.CENTER, true, false);
VornameFeld.setLayoutData (data);

Label Trennlinie = new Label (shell, SWT.SEPARATOR);
data = new GridData (SWT.FILL, SWT.CENTER, false, false, 1, 2);
Trennlinie.setLayoutData (data);

Label Titel = new Label (shell, SWT.NONE);
Titel.setText ("Titel");
data = new GridData ();
data.horizontalIndent = 10;
Titel.setLayoutData (data);

Text TitelFeld = new Text (shell, SWT.BORDER);
data = new GridData (SWT.FILL, SWT.CENTER, true, false);
TitelFeld.setLayoutData (data);

Label Nachname = new Label (shell, SWT.NONE);
Nachname.setText ("Nachname");

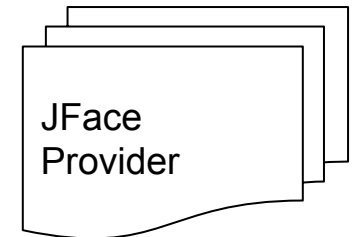
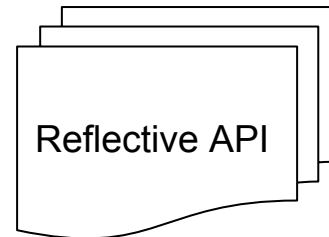
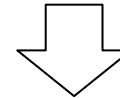
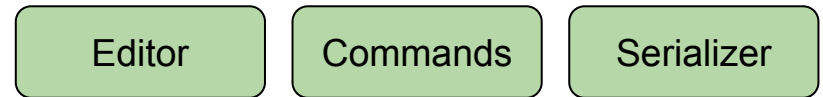
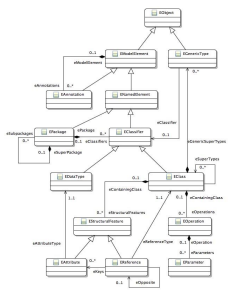
Text NachnameFeld = new Text (shell, SWT.BORDER);
data = new GridData (SWT.FILL, SWT.CENTER, true, false);
NachnameFeld.setLayoutData (data);

Label Geschlecht = new Label (shell, SWT.NONE);
Geschlecht.setText ("Geschlecht");
data = new GridData ();
data.horizontalIndent = 10;
Geschlecht.setLayoutData (data);

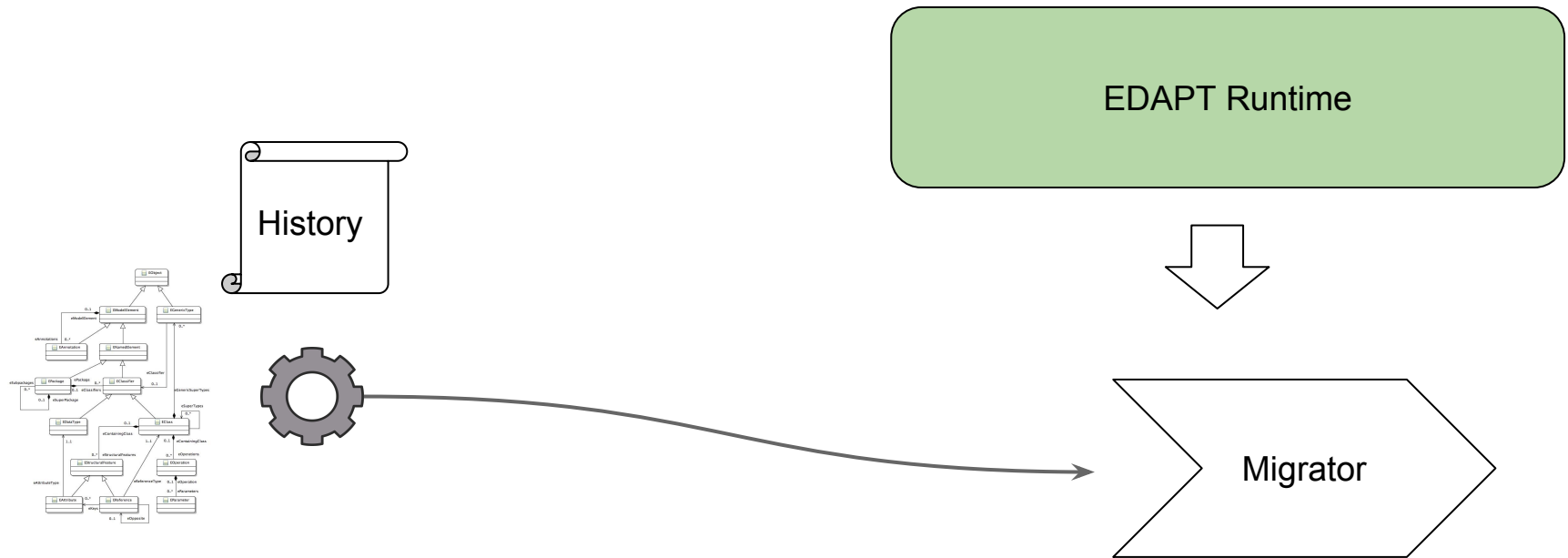
Text GeschlechtFeld = new Text (shell, SWT.BORDER);
data = new GridData (SWT.FILL, SWT.CENTER, true, false);
GeschlechtFeld.setLayoutData (data);

shell.pack ();
    
```

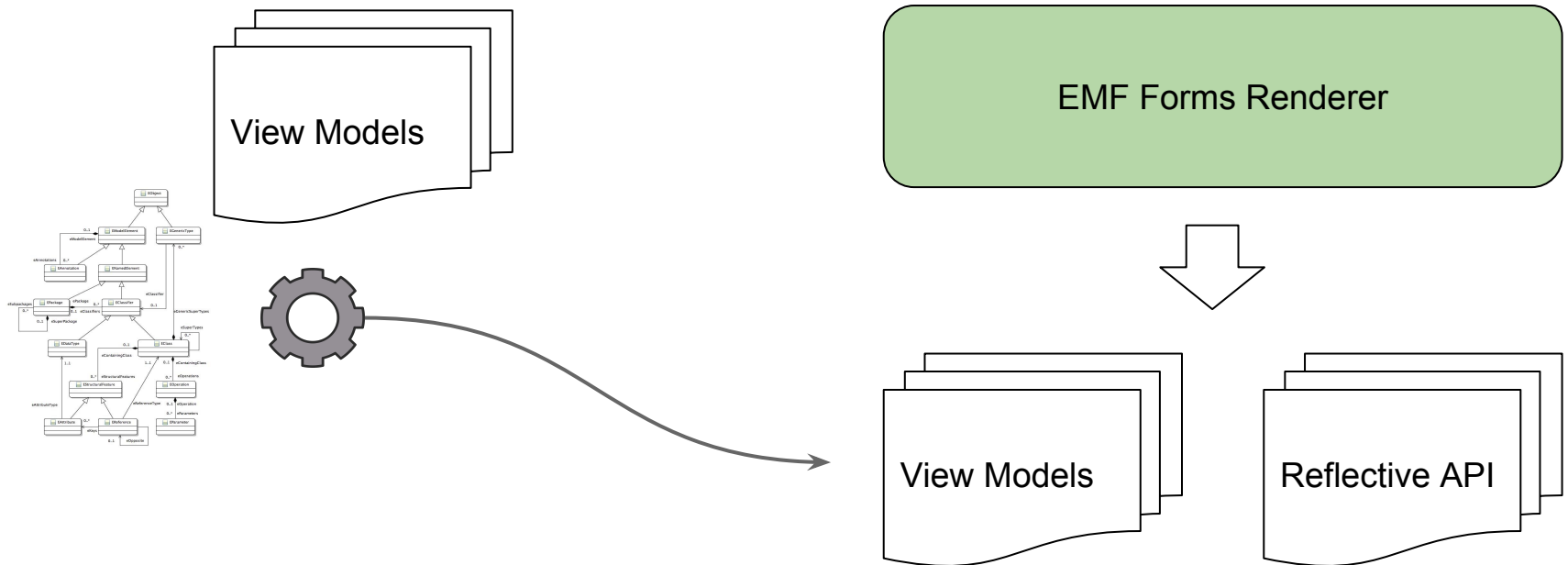
Tree-based UI Undo/Redo Persistence



Instance Migration

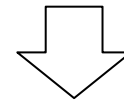


Form-based UI Table-based UI

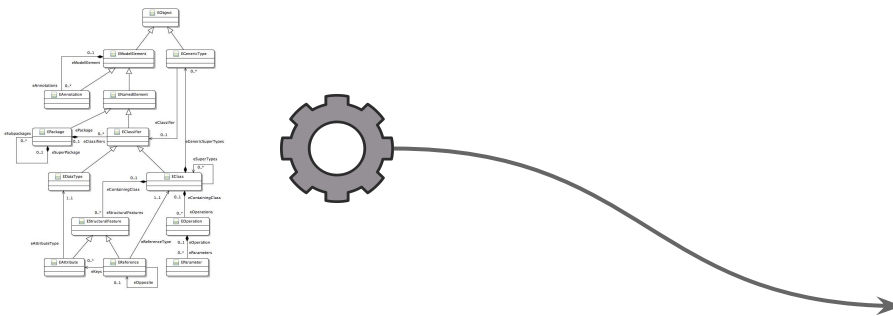


Versioning

EMF Compare

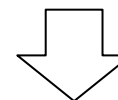


Reflective API

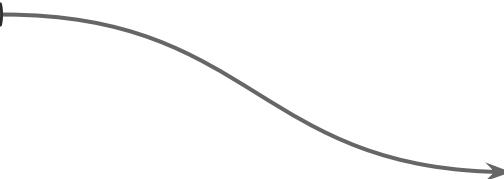
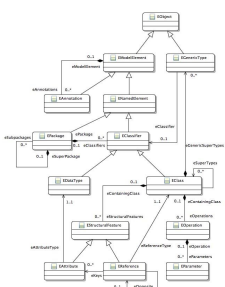


Reflective API

Your custom code

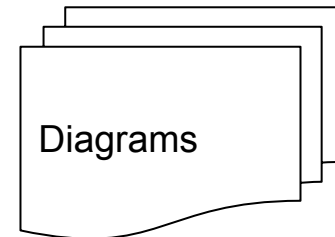
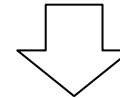
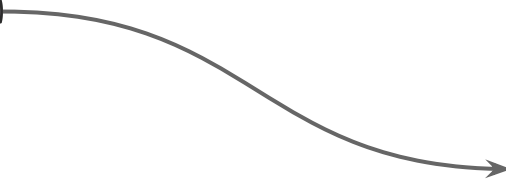
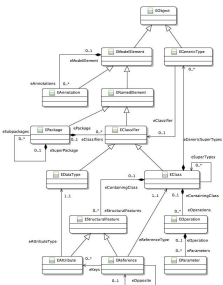


Reflective API



Graphical UI

GEF / GMF / Sirius / Papyrus



More Information

eclipse.org/emf

eclipsesource.com/emftutorial

eclipse.org/edapt

Emfforms.org

eclips.org/emfcompare

Jonas Helming

jhelming@eclipsesource.com



Evaluate **this** Session

Sign in and vote at eclipsecon.org

WITH

~~-1~~

~~0~~

+1