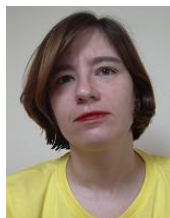


The Future of TmL: A Simulated End-to-End Environment for Mobile Enterprise Applications



Christian Kurzke
TmL Team Lead



Mauren Brenner



Fábio Fantato

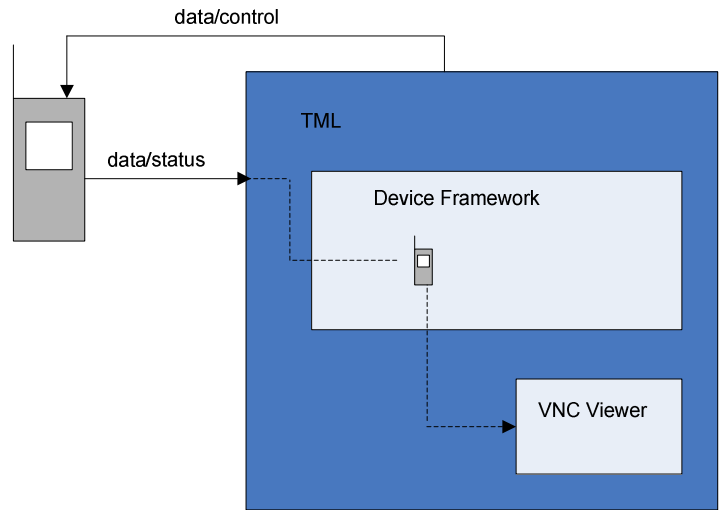


Daniel Franco



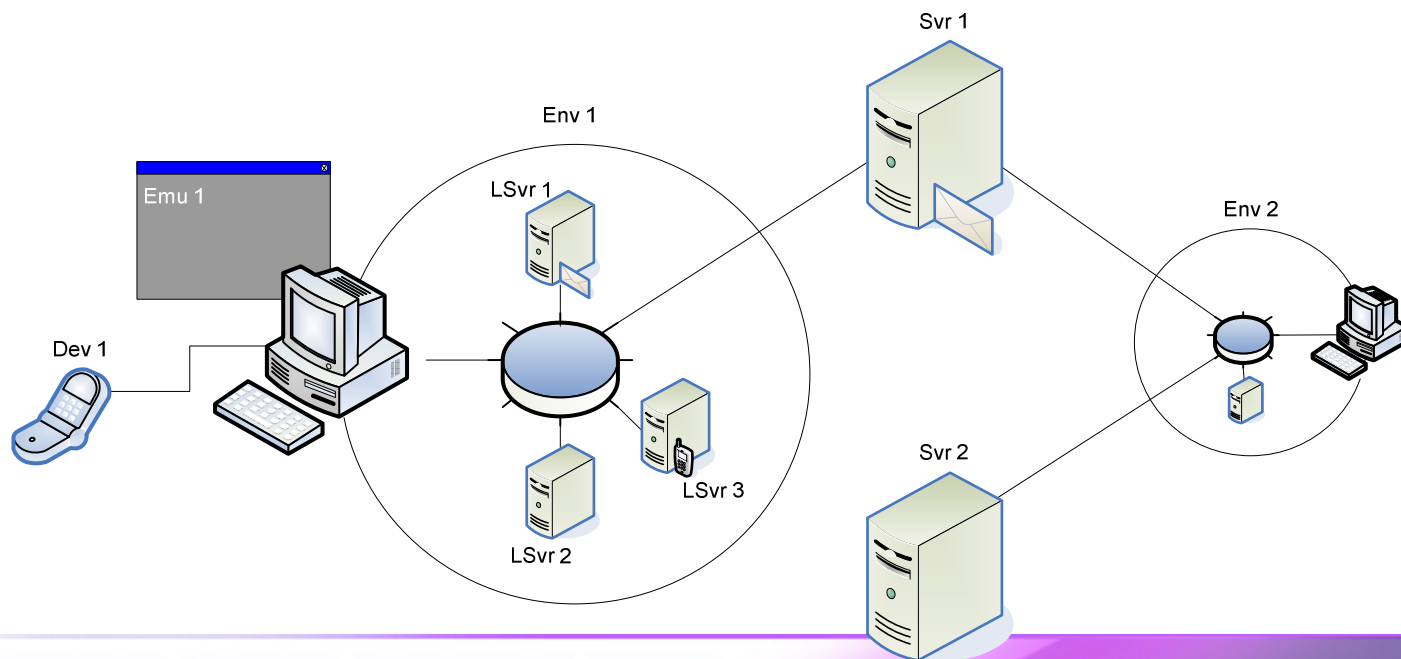
Tools for mobile Linux (TmL): Current Scope

- Current scope
 - ◆ Device Framework, to integrate devices and emulators into the Eclipse IDE
 - ◆ VNC Viewer, to provide display visualization capabilities to such devices and emulators



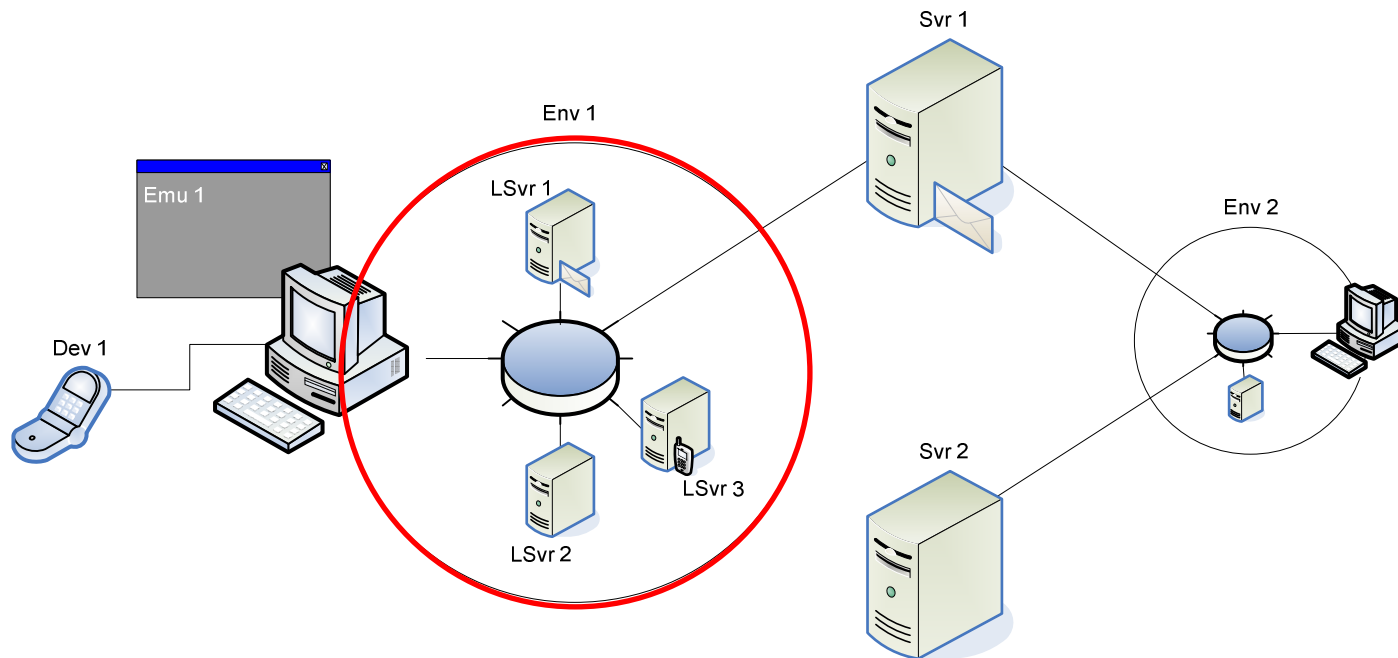
Tools for mobile Linux (TmL): Future Scope

- Simulated end-to-end environment
 - ◆ Integrate devices and emulators into a common simulated network infrastructure
 - ◆ Allow testing of complex mobile enterprise applications



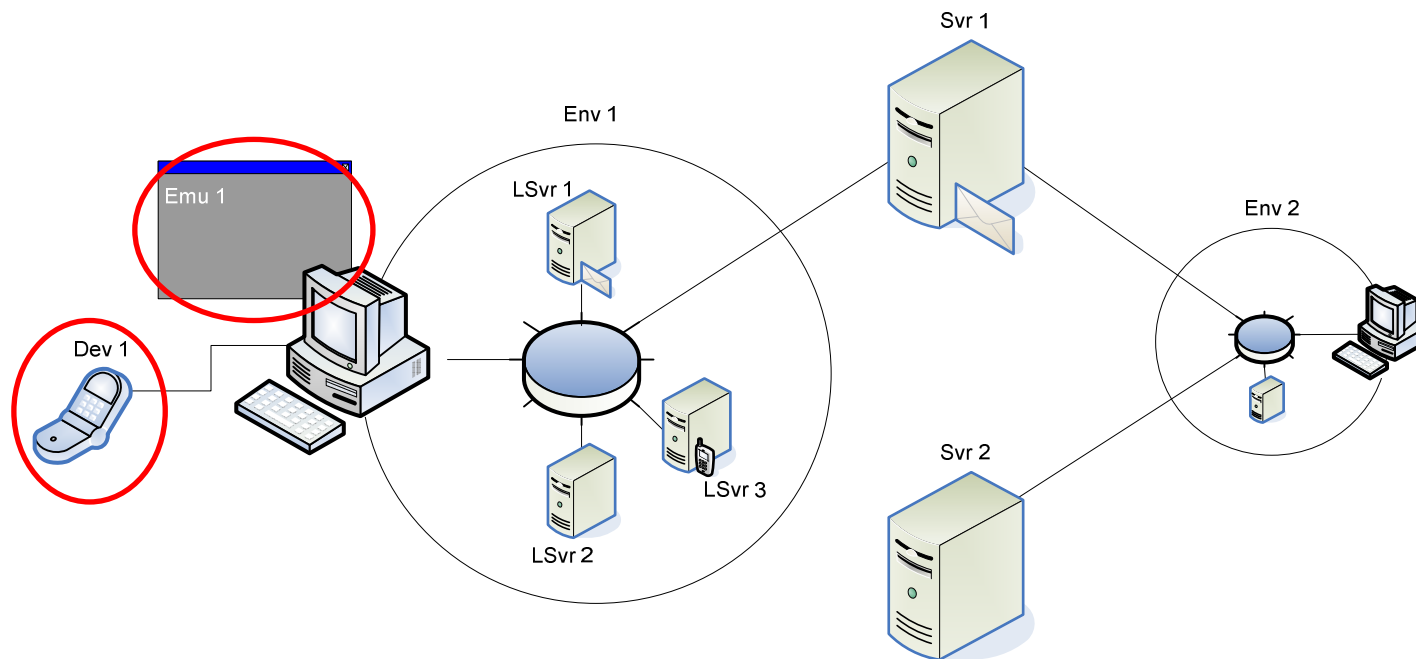
Simulated End-to-End Environment

- Simulated network infrastructure
 - ◆ Data communications and telecommunications



Simulated End-to-End Environment

- Network nodes
 - ◆ Devices and emulators integrated by means of the Device Framework



Simulated End-to-End Environment

- GEF-based editor
 - ◆ Representation of the network nodes
 - ◆ Interconnection of network nodes using the simulated network infrastructure



Questions & Answers

