

# Medany Platform

An eRCP framework based on EMF

Olivier Prouvost  
Anyware Technologies

[olivier.prouvost@anyware-tech.com](mailto:olivier.prouvost@anyware-tech.com)



# Presentation

- Anyware Technologies
  - ▶ French Software Company based in Toulouse
  - ▶ Specialized in Eclipse Technology
  - ▶ <http://www.anyware-tech.com>
- Olivier Prouvost
  - ▶ Eclipse consultant and architect
  - ▶ Involved in Medany project

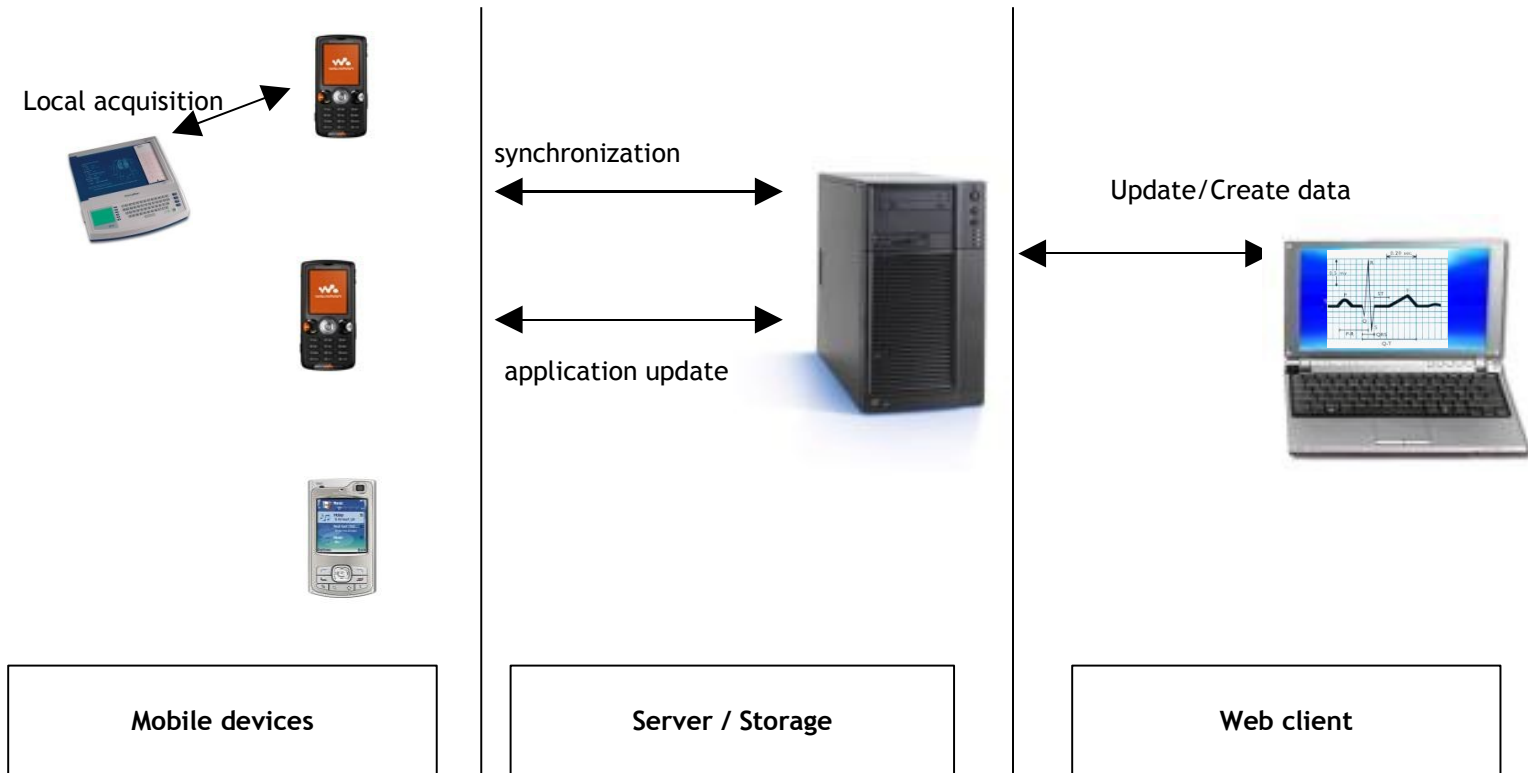
## Initial Needs

- Acquiring data on mobile devices
  - ▶ texts, numerics, multimedia (pictures, sounds...)
  - ▶ external devices (glucometer, sensors...)
- Synchronizing these data on a server
- Notifying actors : SMS, Mail, ...
- Having applications to access to data (web...)

## Initial Constraints

- Data security
  - ▶ access restrictions (Medical data, global data...)
- Small bandwidth
- Simplicity
  - ▶ usage: for nurses, doctors...
  - ▶ update: interfacing with other devices must be easy.
  - ▶ synchronization: automatic, two ways, disconnection

# Medany Applications



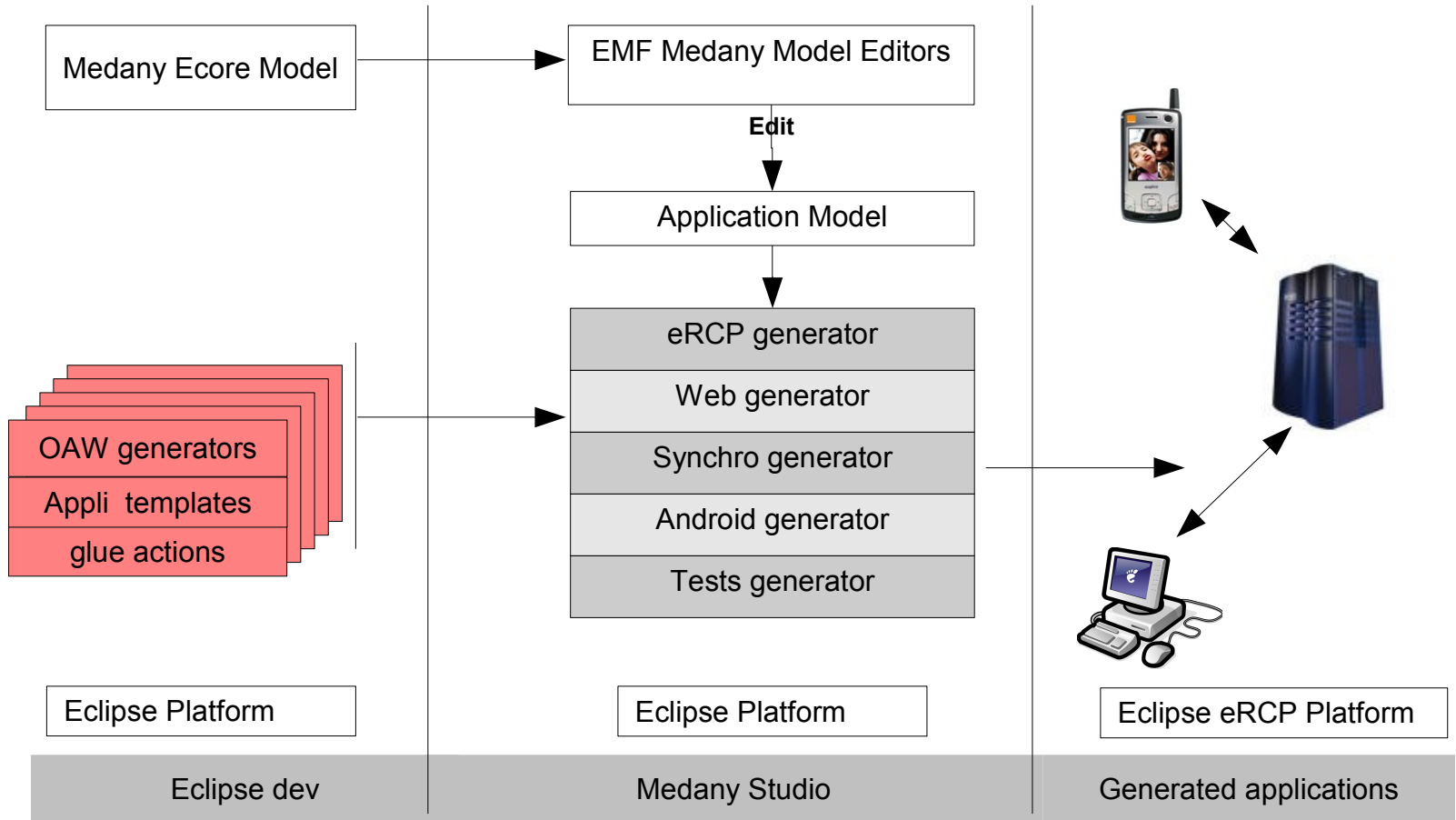
## Medany Scope

- Runtimes based on eclipse components
  - ▶ implement initial needs
    - PDA acquisition, synchronization, notification, eUpdate
- Tools to generate application(s) based on runtimes
  - ▶ model editors for application
  - ▶ projects, wizards, launch configurations
  - ▶ a set of generators based on model

## Medany Tools principle

- Design initial needs in a meta model
  - ▶ define the roles, cards, fields, ...
- Provide the model editor
- Define generation features
  - ▶ specific generators for a target technology
  - ▶ application template for the target application
  - ▶ some glue actions

# Medany Studio Picture

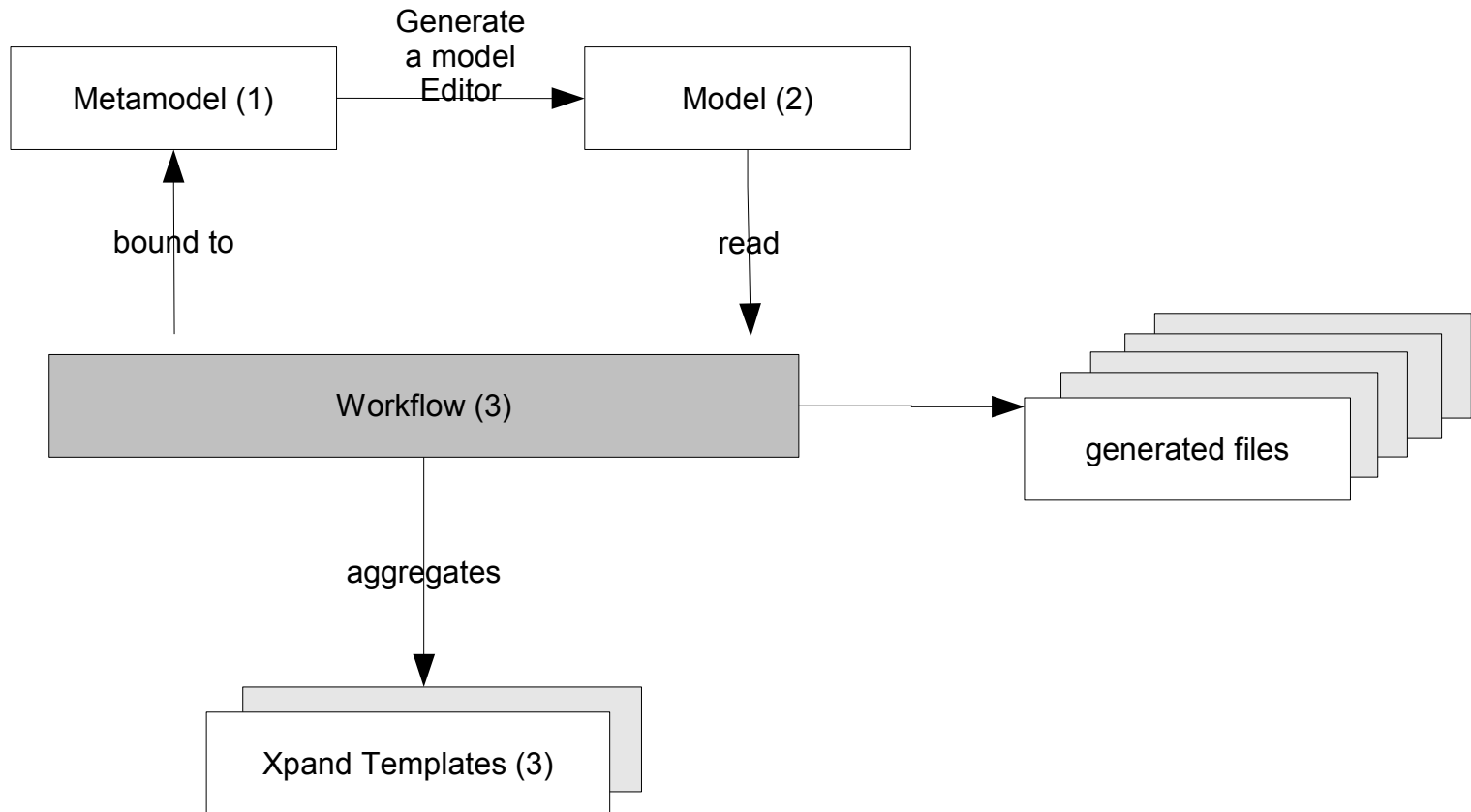




# openArchitectureWare

- used to generate applications
- strong concepts:
  - ▶ Xpand template language
    - polymorphic language bound to model
  - ▶ aspect programming
- lots of tools:
  - editors
  - debugger

# oAW Principle.



# Conclusion

- Eclipse/EMF/OAW the perfect association
  - ▶ Easy to use
  - ▶ Extensible
  - ▶ Fully integrated

## More Information

olivier.prouvost@anyware-tech.com

Eclipse Time 29th of May 2008  
in Toulouse (France)

<http://www.eclipsetime.org>

eclipse  
*Time*