



Create Web 2.0 style Rich Clients with Eclipse

(experiences in building RCP apps for Web2.0 clients)

Suresh Krishna, Oracle Inc.
EclipseCon, 03.19.2008.



Background :

- Proliferation of Web2.0 frameworks
- Rich and Interactive Widgets from Web2.0 Frameworks
- Eclipse as IDE for the IT/Business developers

Challenges :

- Too many AJAX frameworks
- Widgets styles and effects are different
- Web2.0 UI is more on the css and js based where as Eclipse is SWT and Jface based

Alternatives :

- Use/customize SWT/Jface widgets
- Use/customize Nebula widgets
- Cool widgets and composites from RCP Toolbox
- Eclipse RAP Project
- Google Uface Project
- *and others yet to be explored* 😊

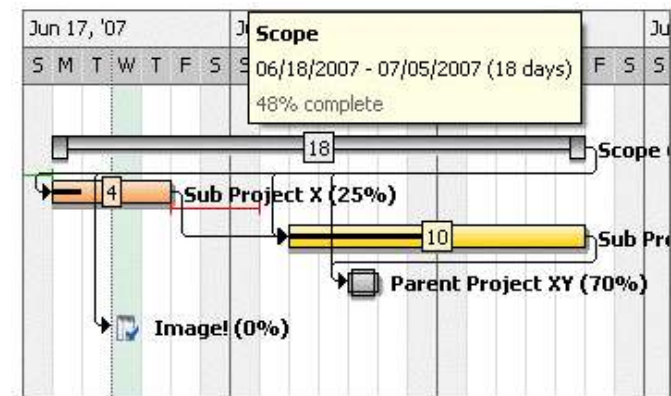
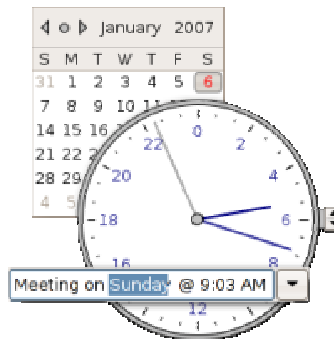
Components for a cool RCP – I :

- Browser in the application – IE / Mozilla / Safari
- Button with Text and Images
- Non-rectangular Buttons
- Use Forms-Toolkit and Sections – like plugin.xml editor
- Cursor from Images
- Usage of ExpandBar whenever necessary
- Link widget to simulate html LNF
- Different styles from styled text

Components for a cool RCP – II :

- Emulated tooltips for TableItems, TabFolder, etc...
- CDateTime Widget
- Composite Table for data oriented tables
- Formatted text widgets for validations and formatting
- PShelf / Accordion widget for cool navigation
- Calander Combo
- GanttChart in Workforce time management apps

Cool Widgets – I

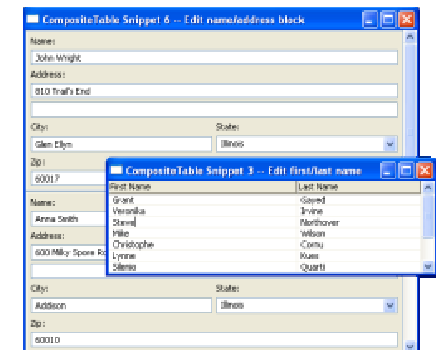


```
DateTimeFormatter("yyyy/MM/dd H:m:s")
    2007/03/30 23:27:21

NumberFormatter("#,###,##0.##", Locale.FRENCH)
    12 345,56

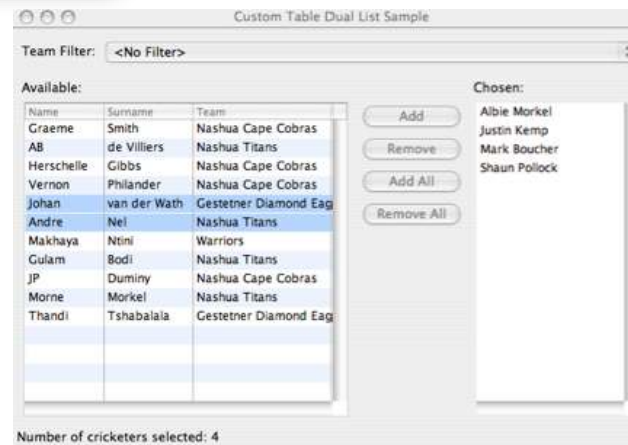
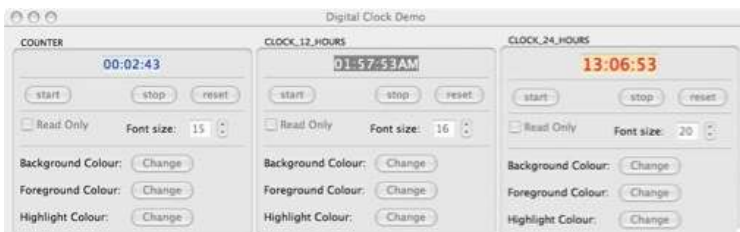
MaskFormatter("#####-#####-UUUUUUUUUU-##")
    01234-56789-QJHDJQHJQJ5-45
```

	First Column	Column Grouping	The Column #2	Click me
1	<input type="checkbox"/> Item #...0000	Test data	asdfas;dfjk	
2	<input type="checkbox"/> should be 11	first tree		
3	<input type="checkbox"/> securtree	this is a readonly checkbox (if		
4	<input type="checkbox"/> first tree	first tree		
5	<input type="checkbox"/> first tree	first tree		
6	<input type="checkbox"/> Item #55	This cell spans over many columns, use setColumnSpan to achieve this		
8	<input type="checkbox"/> Item #3	Test data	asdfas;dfjk	
9	<input type="checkbox"/> Item #4	Test data	asdfas;dfjk	
10	<input type="checkbox"/> Item #5	Test data	asdfas;dfjk	



Cool Widgets – II

Visit the Eclipse.org project



Resources :

- SWT Controls : <http://www.eclipse.org/swt/snippets>
- Nebula Project : <http://www.eclipse.org/nebula>
- RAP Project : <http://www.eclipse.org/rap>
- SWT ToolKit : <http://rcptoolbox.sourceforge.net>
- Uface Project : <http://code.google.com/p/uface>



Thanks for your time !!!

Enjoy your RCP applications with cool LNF.

Questions : suresh.madhuvarasu@oracle.com

Myself : <http://www.sureshkrishna.com>

Eclipse Blog : <http://sureshkrishna.wordpress.com>