

## **eRCP Project, today and tomorrow**

Gorkem Ercan, Nokia, Finland

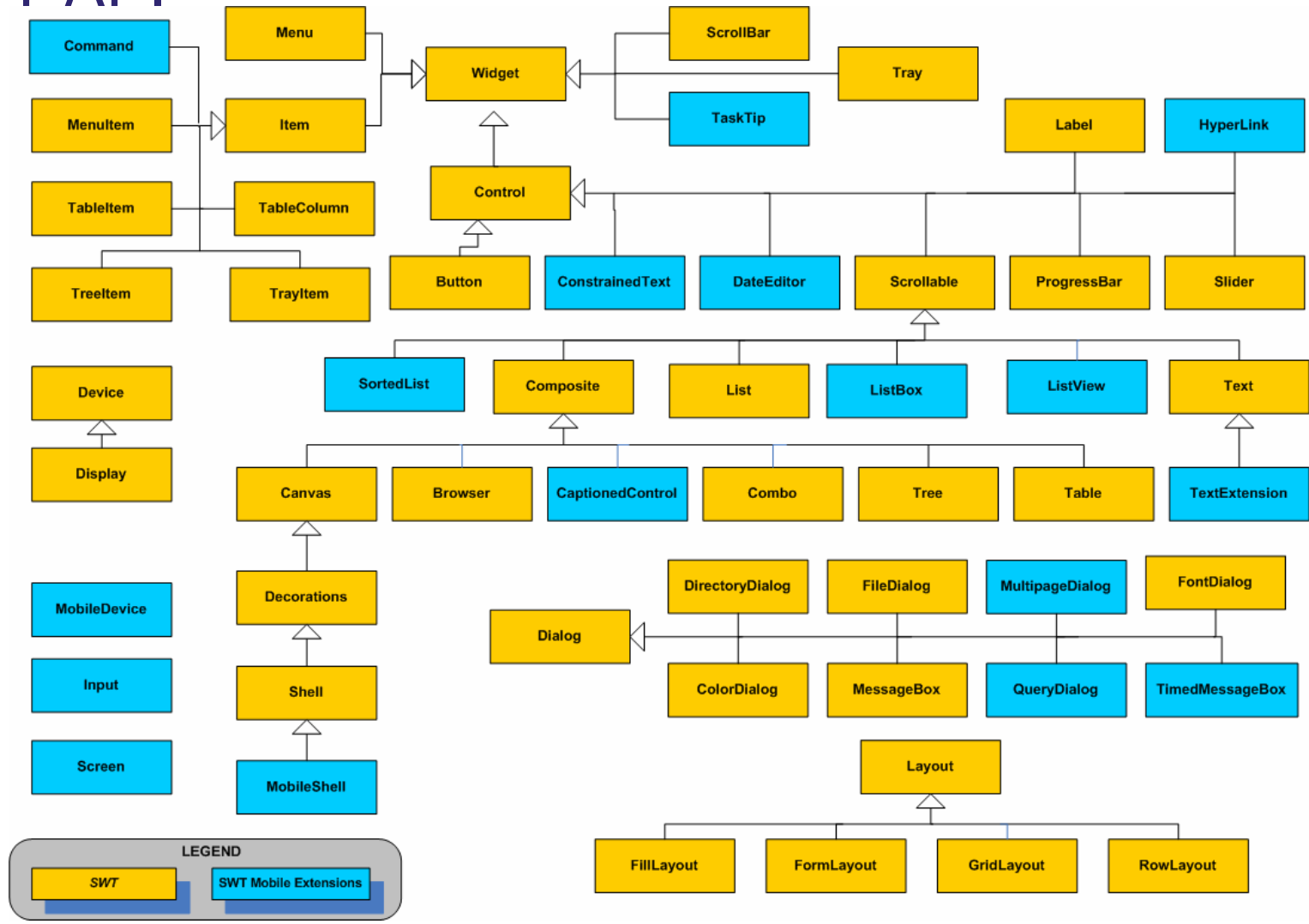
## What is eRCP

- eRCP is the embedded version of the Rich Client Platform
- Project was launched by Nokia, IBM and Motorola
- Utilizes standard OSGi Service Platform
- Reduces RCP size and functionality to fit on devices
- Pushes requirements/patches back to core components
  - ◆ Enable running core components on JME CDC/Foundation Profile
  - ◆ Keep dependencies in check
- Adds components to enable application binary compatibility across a range of devices

## What is eSWT

- Subset of SWT and additional mobile specific widgets
- Provides efficient, portable access to the user interface facilities of the operating system
- Consists of 3 packages
  - ◆ SWT subset divided into two
    - *core* package
    - *expanded* package
  - ◆ *mobile* package - new eSWT components defined for mobile world

## eSWT API



# How does SWT widgets look on a device

The image displays five screenshots of SWT widgets on a device:

- Browser (SWT.BROWSER)**: Shows HTML content with a title "HTML in Browser", a link "Link in HTML", and two lines of text: "This is line 0" and "This is line 1".
- Button (SWT.TOGGLE)**: Shows two buttons labeled "Toggle On" and "Toggle Off".
- Tree (SWT.SINGLE)**: Shows a tree structure with a root node "Node 0" and several sub-nodes (Node 0.0 to Node 0.3).
- Table (SWT.SINGLE)**: Shows a table with columns "C", "!", and "Description". The table contains five rows of data, each with a small icon in the "C" column and the text "this stuff behave" in the "Description" column. A "Select" button is at the bottom.
- Compose mail (SWT.COMPOSE)**: Shows a form for composing an email with fields for "To:" (press@nokia.com), "Cc:" (eswt\_team@nokia.com), and "Subject:" (Release of eSWT). The body contains the text "Hi, We are very happy to inform You that Nokia will be supporting eSWT starting from S60 3rd Edition Feature Pack 2!". Buttons for "Options" and "Cancel" are at the bottom.
- List (SWT.MULTI)**: Shows a list of items from "Item 24" to "Item 31", each with a checkbox. A "Mark" button is at the bottom.

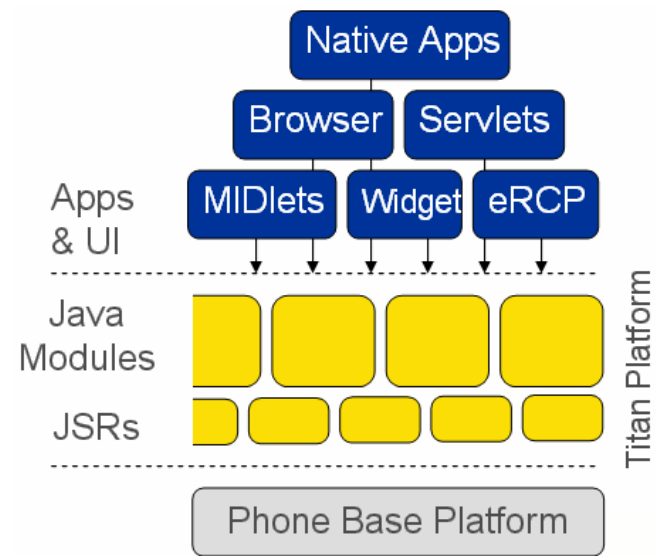
## Industry News: eSWT with Java ME Midlets



- Java ME MIDP is the most common computing platform
  - ◆ 700+ million java enabled phones
  - ◆ 635+ java enabled phone models from 35+ vendors
- Available on **all** Nokia S60 3<sup>rd</sup> Ed. FP2 devices
- Alternate UI toolkit for Java ME applications

## Industry News: Sprint Titan

- New Java/OSGi based service platform for phone apps
- Multiple app model support (MIDP2, eRCP, Bundles, Web Apps)
- Full remote management support via OMA-DM/DL
- Advanced security model
- **Toolchain** offered by ADP



## What is Next

- eRCP 1.2 is due this summer
  - ◆ Following eclipse 3.4 release
  - ◆ New APIs in eSWT
- eRCP move to new runtime top level project
- Excited about p2 and e4
  - ◆ Seeking ways to integrate p2
  - ◆ Participate on e4 work



## Conclusion

- eRCP brings the RCP paradigm to mobile devices
- Website
  - ◆ <http://www.eclipse.org/ercp>
- Newsgroups
  - ◆ <news://news.eclipse.org/eclipse.dsdp.ercp>
- Always looking for contributors!